

STINGER 35-100



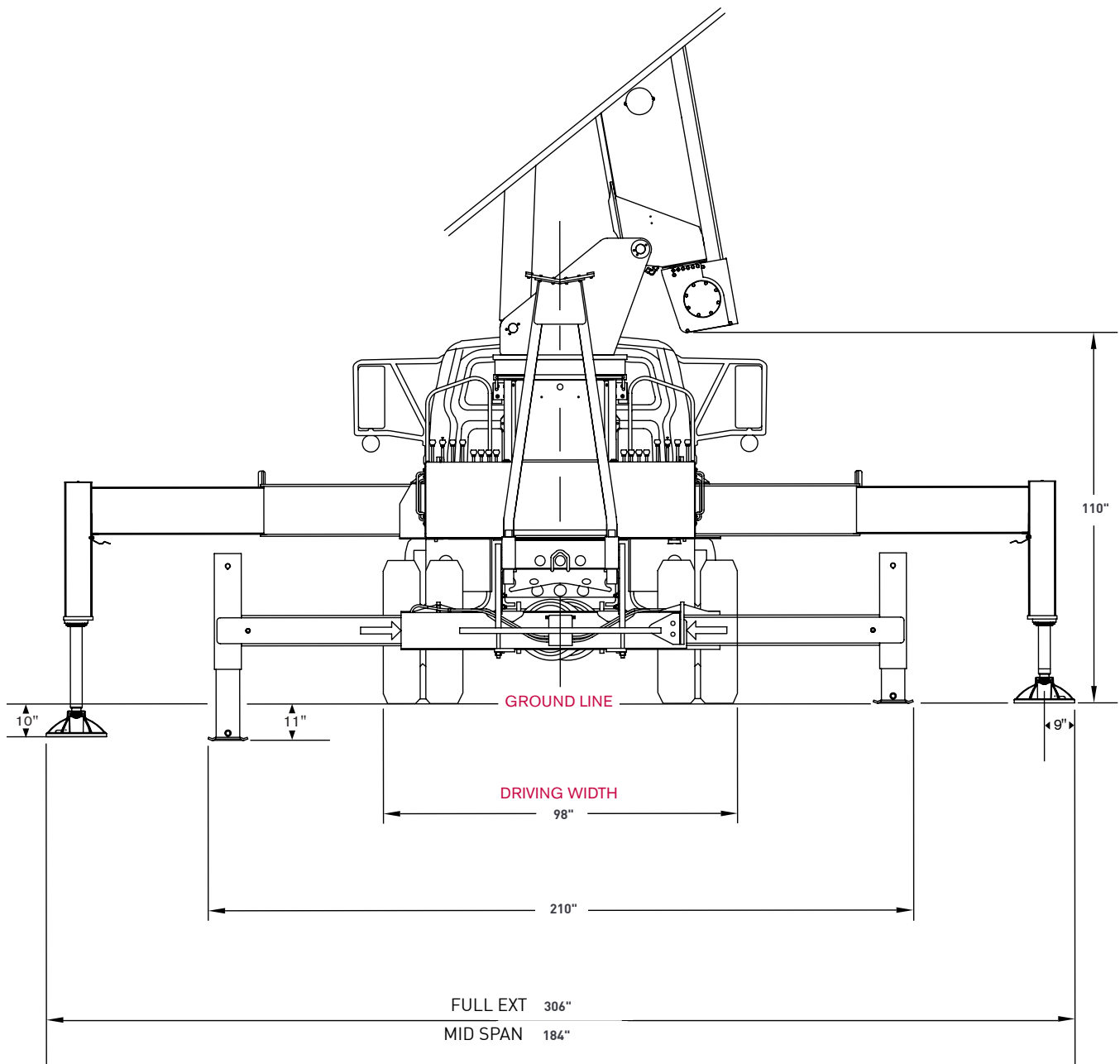
Features: STINGER 35-100

- 35 US t @ 5ft
- 100 ft maximum boom length
- 110 ft maximum tip height
- 30.5-55 ft optional jib
- 165 ft maximum tip height with 55 ft jib
- Electronic rated capacity indicator
- Quick reeving boom head
- Out and down outriggers
- Two-speed winch

DIMENSIONS

STINGER 35-100

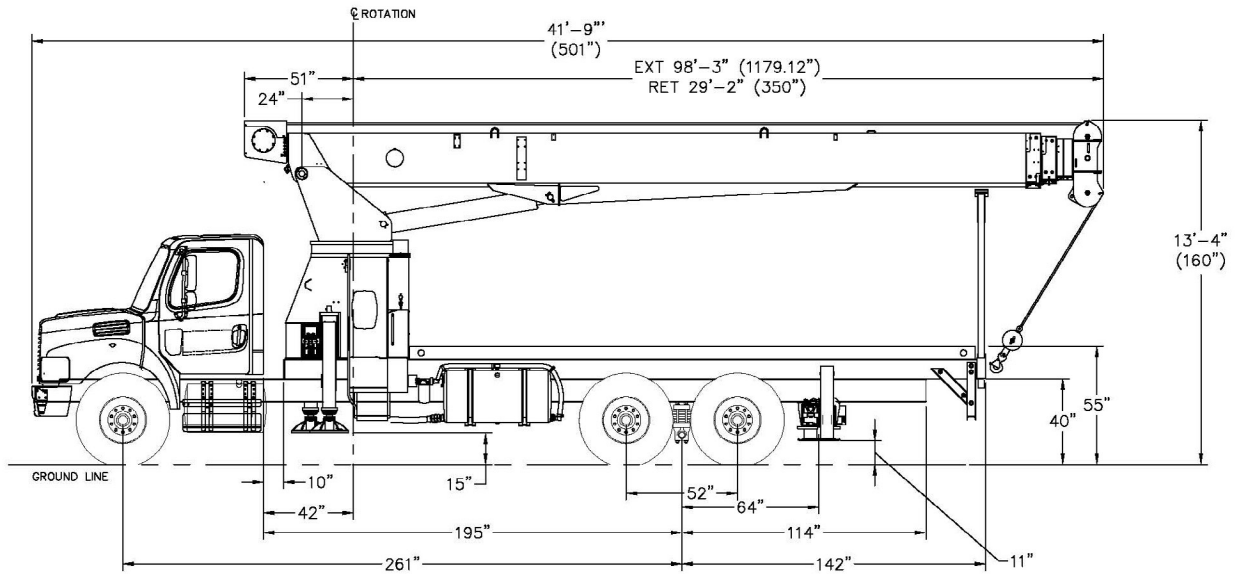
Crane Dimensions



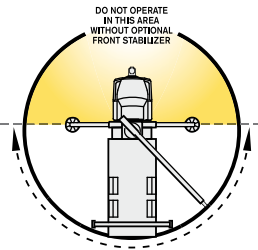
DIMENSIONS

STINGER 35-100

EXAMPLE LAYOUT DRAWING



Area of Operation



Mounting Specifications

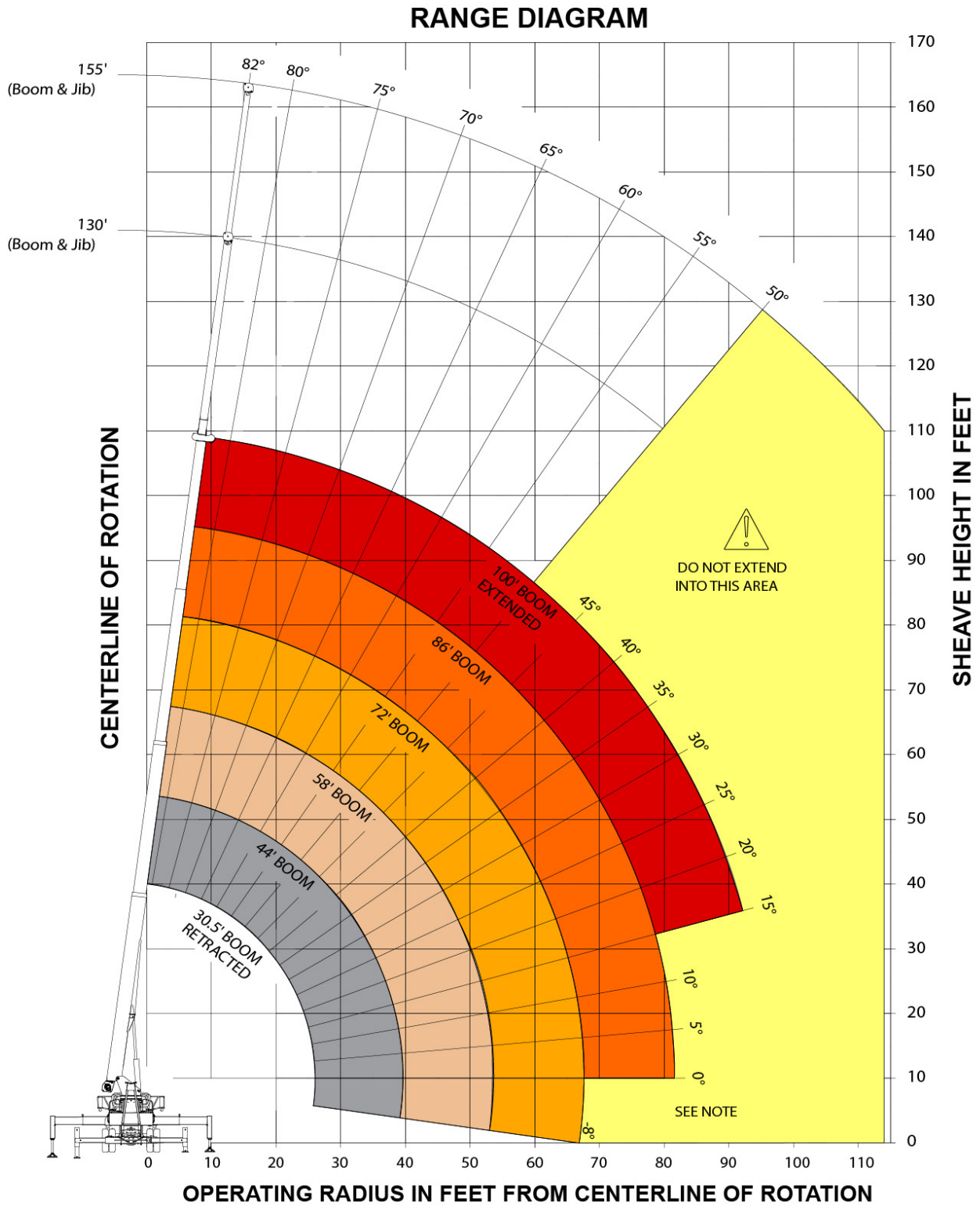
Chassis Recommendation

Gross Vehicle Weight Rating	60,000 lb
Front Axle Weight Rating	20,000 lb
Rear Axle Weight Rating	40,000 lb
Wheelbase	261 +/- 4 in
Cab to Axle	192 +/- 4 in
Afterframe	114 +/- 4 in
RBM per Frame Rail	3,300,000 lb/in
Frame Height (Unloaded)	40 in
Frame Section Modulus	30.0in ³
Crane Weight (Base Machine)	32,000 lb

RANGE DIAGRAM

STINGER 35-100

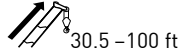
Outriggers Fully Extended



LOAD CHARTS

STINGER 35-100

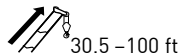
Outriggers Fully Extended



Standard ASME B30.5

ft	Boom Length						ft
	30.5 lb	44 lb	58 lb	72 lb	86 lb	100 lb	
5	70,000						5
8	54,900						8
10	46,300	31,300					10
12	40,000	31,700	31,100				12
15	33,200	31,600	30,500	27,600			15
20	24,400	24,500	23,600	21,200	19,000		20
25	18,300	19,100	19,100	17,200	15,300	12,100	25
30		15,000	15,400	14,400	12,900	10,500	30
35		11,900	12,300	12,000	11,100	9,100	35
40		9,000	9,400	9,400	9,500	7,000	40
45			7,400	7,600	7,700	6,000	45
50			5,900	6,100	6,200	5,100	50
55			4,600	5,000	5,100	4,500	55
60				4,000	4,200	3,900	60
65				3,200	3,400	3,400	65
70					2,800	2,900	70
75					2,200	2,400	75
80					1,700	1,900	80
85						1,500	85
90						1,100	90
95						800	95

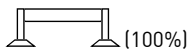
Boom at 0°



Standard ASME B30.5

ft	Boom Length						ft
	30.5 lb	44 lb	58 lb	72 lb	86 lb	100 lb	
0	8,700	4,900	2,800	1,600	700	-	0

With Jib, Retracted and Extended



Standard ASME B30.5

ft	Jib Capacities for All Boom Lengths								ft
	80° lb	78° lb	75° lb	70° lb	65° lb	60° lb	55° lb	50° lb	
30.5	6,450	6,000	5,300	4,000	3,300	2,300	1,400	800	30.5
55	3,500	3,500	3,500	2,900	2,300	1,700	1,050	700	55

Notes to lifting capacity

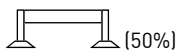
Lifting capacities do not exceed 85% of tipping load. Weight of hook blocks and slings are part of the load, and are to be deducted from the capacity ratings. Consult operation manual for further details.

Note: Data published herein is intended as a guide only and shall not be construed to warrant applicability for lifting purposes. Crane operation is subject to the computer charts and operation manual both supplied with the crane.

LOAD CHARTS

STINGER 35-100

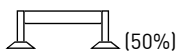
Mid-span Outriggers



Standard ASME B30.5

ft	Boom Length						ft
	30.5 lb	44 lb	58 lb	72 lb	86 lb	100 lb	
5	70,000						5
8	47,000						8
10	42,100	31,300					10
12	37,300	31,700	31,100				12
15	31,600	31,600	30,500	27,600			15
20	16,900	11,100	18,000	18,600	18,300		20
25	10,100	7,400	11,400	11,600	11,700	11,800	25
30		5,000	7,700	7,900	8,000	8,100	30
35		3,300	5,400	5,600	5,700	5,800	35
40			3,800	4,000	4,200	4,200	40
45			2,600	2,900	3,000	3,100	45
50			1,700	2,000	2,100	2,200	50
55			900	1,200	1,400	1,500	55
60						900	60

Boom at 0°



Standard ASME B30.5

0	Boom Length						0
	30.5 lb	44 lb	58 lb	72 lb	86 lb	100 lb	
0	7,100	2,700	-	-	-	-	0

With Jib, Retracted and Extended



Standard ASME B30.5

ft	Jib Capacities for All Boom Lengths					ft
	80° lb	78° lb	75° lb	70° lb	65° lb	
30.5	6,450	6,000	5,300	3,175	1,650	30.5
55	3,500	3,500	3,500	2,800	1,275	55

Notes to lifting capacity

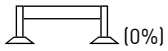
Lifting capacities do not exceed 85% of tipping load. Weight of hook blocks and slings are part of the load, and are to be deducted from the capacity ratings. Consult operation manual for further details.

Note: Data published herein is intended as a guide only and shall not be construed to warrant applicability for lifting purposes. Crane operation is subject to the computer charts and operation manual both supplied with the crane.

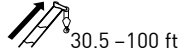
LOAD CHARTS

STINGER 35-100

Outriggers Fully Retracted



(0%)



30.5 - 100 ft

Standard ASME B30.5

ft	Boom Length						ft
	30.5 lb	44 lb	58 lb	72 lb	86 lb	100 lb	
5	43,700						5
8	25,400						8
10	16,100	16,800					10
12	11,200	11,900	12,200				12
15	7,000	7,800	8,100	8,200			15
20	3,300	4,200	4,500	4,700	4,800		20
25	1,300	2,200	2,600	2,800	2,900	3,000	25
30		1,000	1,400	1,600	1,800	1,800	30
35					900	1,000	35

Notes to lifting capacity



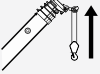
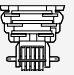


Lifting capacities do not exceed 75% of tipping load. Weight of hook blocks and slings are part of the load, and are to be deducted from the capacity ratings. Consult operation manual for further details.

Note: Data published herein is intended as a guide only and shall not be construed to warrant applicability for lifting purposes. Crane operation is subject to the computer charts and operation manual both supplied with the crane.

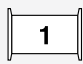
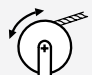
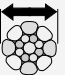
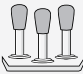
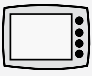
TECHNICAL DESCRIPTION

STINGER 35-100

Boom, Jib and Rotation

	Full power fully synchronized telescopic keel boom	4 sections
	Boom elevation angle range (min/max)	-8° / 82°
	Boom up/down time	35/ 70 seconds
	Boom extension/retraction time	90/ 50 seconds
	Boom length	30.5-100 ft
	Boom maximum sheave height	110 ft
	Boom head	Quick reeving
	Maximum tip height: With optional jib 30.5-55 ft	165 ft
	370° non-continuous rotation or optional 360° continuous rotation	

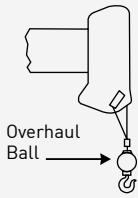
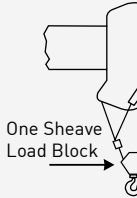
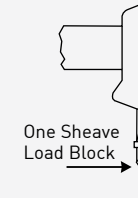
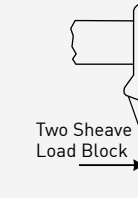
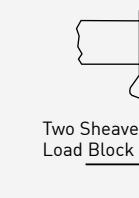


Operator Controls and Operator Aid

	Hoist line pull (first layer)	High: 6,900, Low: 14,800
	Hoist line speed (3rd layer)	High: 211 ft/sec, Low: 93 ft.sec
	Rope diameter	5/8 in
	Fully proportional	
	Electronic rated capacity indicator	

TECHNICAL DESCRIPTION

STINGER 35-100

Rope and Reeving

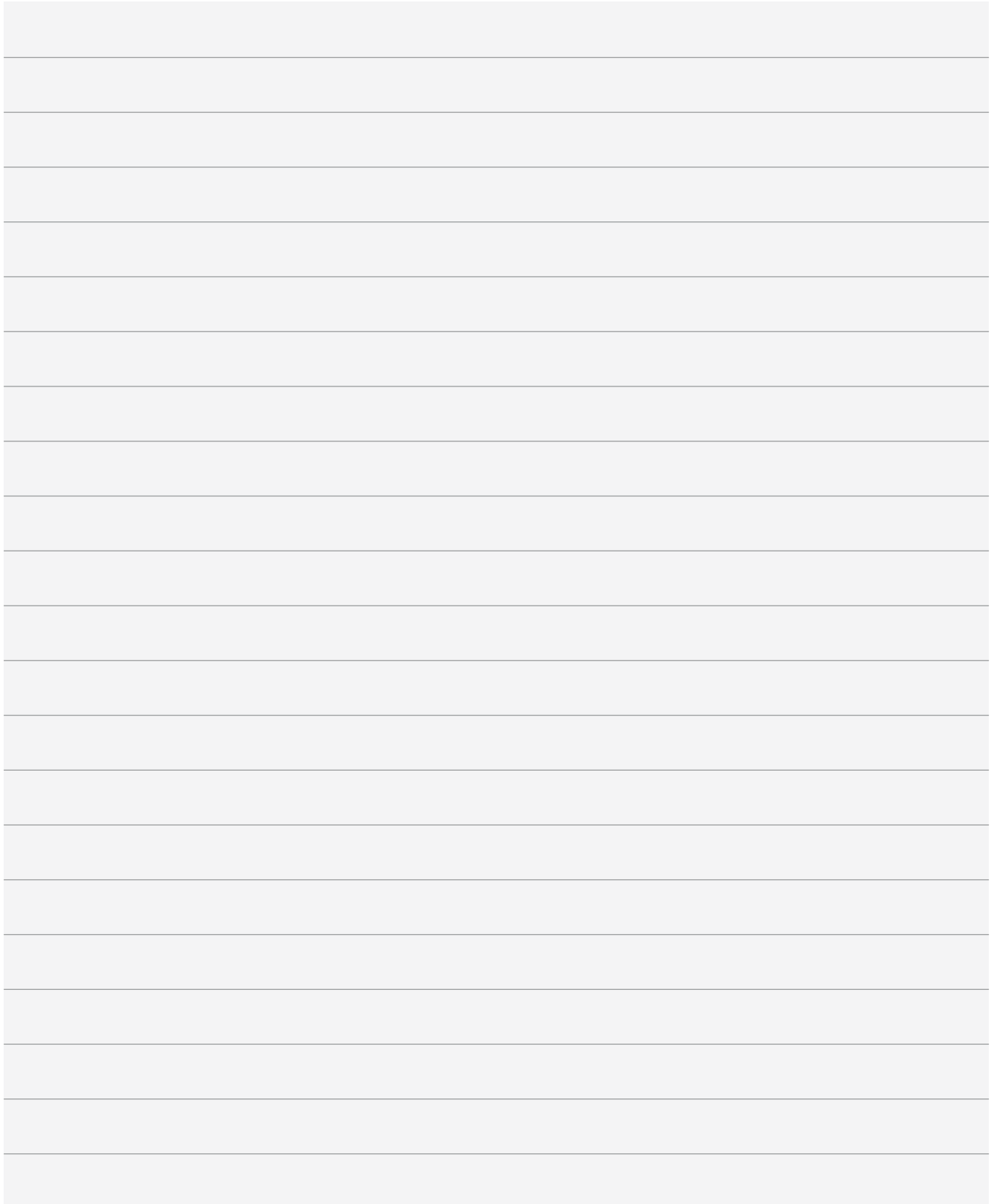
1 Part Line	2 Part Line	3 Part Line	4 Part Line	5 Part Line	6 Part Line
					
Loads Up To: 12,971 lbs **9,080 lbs	Loads Up To: 25,942 lbs **18,160 lbs	Loads Up To: 38,913 lbs **27,240 lbs	Loads Up To: 51,884 lbs **36,320 lbs	Loads Up To: 65,855 lbs **45,500 lbs	Loads Up To: 70,000 lbs **54,480 lbs
<p>Hoist Rope 5/8" 6 x 19 or 6 x 37 EEIPS IWRC, preformed right regular lay, min breaking strength 45,400 lbs ** 5/8" rotation resistant 19 x 19 compacted strand EEIPS, min breaking strength 45,400 lbs</p>					
	Overhaul ball				7 US t
	1 Sheave block				20 US t
	2 Sheave block				30 US t
	3 Sheave block				40 US t

Understructure

	Front: H-Type out and down, To outer edge of pad	306"
	Rear: H-type out and down, To outer edge of pad	210"

Optional Features

- Two-stage jib
- Rotation resistant rope
- Multi-part load blocks
- 22' heavy duty wood and steel flatbeds
- Radio remote controls
- Two-man basket
- Hoist drum tensioner
- Continuous rotation
- Oil cooler
- Single front bumper outrigger
- Tool box



STINGER 35-100

www.loadkingmfg.com

